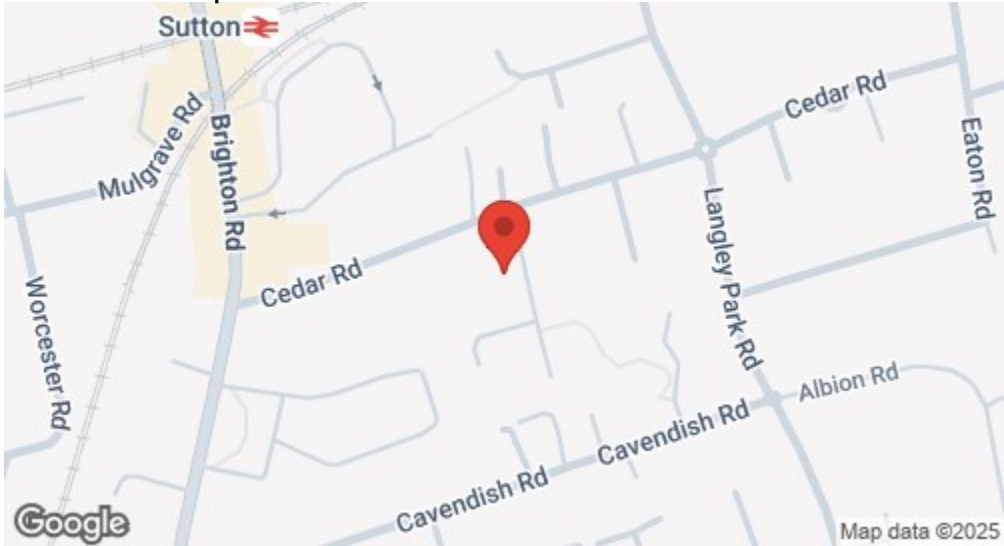
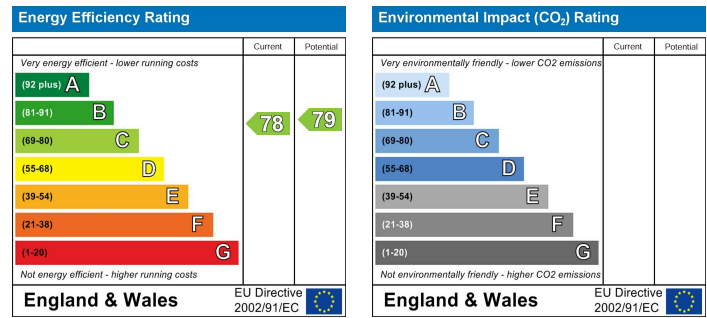


Location

Location Map



EPC Graph



Important Note

Centro Residential Sales and Lettings limited have not tested any services, heating system, electrical system, appliances, fixtures and fittings, that may be included in this property and would advise interested parties to satisfy themselves as to their condition or investigating the presence of any deleterious materials.

Viewing: Strictly by appointment through:

CENTRO RESIDENTIAL SALES AND LETTINGS LIMITED

Tel: 020 8401 5000

E-mail: residential@centro.plc.uk

See a selection of our properties at www.centro.plc.uk

£2,000 Per Month - 4th August 2025

Cedar Gardens, Sutton, SM2 5EQ



Description

- Maisonette
- Split Level
- Three Bedrooms
- Garage
- Part Furnished
- Cul-De-Sac Location
- EPC Rating: C
- Council Tax Band: C

Features

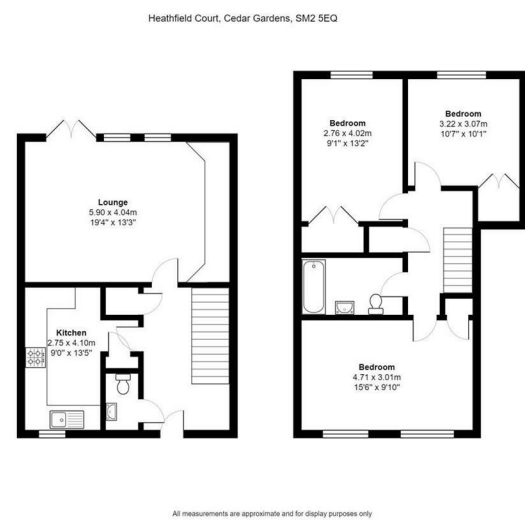
- Gas central heating
- Double glazing
- Garage

What you need to know

- Term: 12 months
- Rent: £2000pcm exclusive of bills
- Security deposit: £2307.00
- Energy rating: C
- Council Tax Band: C



Floor Plan



For illustration purposes only



All dimensions and measurements are approximate and for guidance only.

Just Centro's Opinion...

A well-presented three-bedroom split level Maisonette located in a quiet cul-de-sac in Sutton and walking distance to Sutton Rail Station and Sutton High Street.

This lovely home offers you a modern kitchen, a spacious lounge with direct access to a communal garden, as well as a separate W.C. Upstairs you have three double bedrooms and a family bathroom suite.

Benefits include, Garage, Storage Space, Gas Central Heating, Double Glazing and neutral decor.

Offered part furnished and available to view now.

Additional Photos

