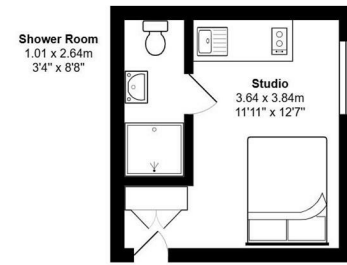


Floor Plan

Belmont Road, Wallington, SM6 8TE (Second Floor 7)



Total Area: 13.9 m² ... 150 ft²

All measurements are approximate and for display purposes only

For illustration purposes only



All dimensions and measurements are approximate and for guidance only.

Just Centro's Opinion...

Stylish Studio Apartments - One of 11-Brand New Homes in the Heart of Wallington

Be the first to move into this beautifully designed studio apartment, part of an exclusive new development of just 11 homes in central Wallington. Each apartment offers a unique layout, with prices and sizes to suit different lifestyles and budgets.

The development caters for professionals, couples and students, this fully furnished studio combines contemporary style with practical living:

- Comfortable double bed with storage underneath
- Large wardrobe, chest of drawers & plenty of storage
- Modern private kitchen (fridge, oven, microwave, two-ring hob, extractor fan, washer-dryer)
- Stylish en-suite with high-pressure rainfall shower

Residents also enjoy:

Additional Photos

