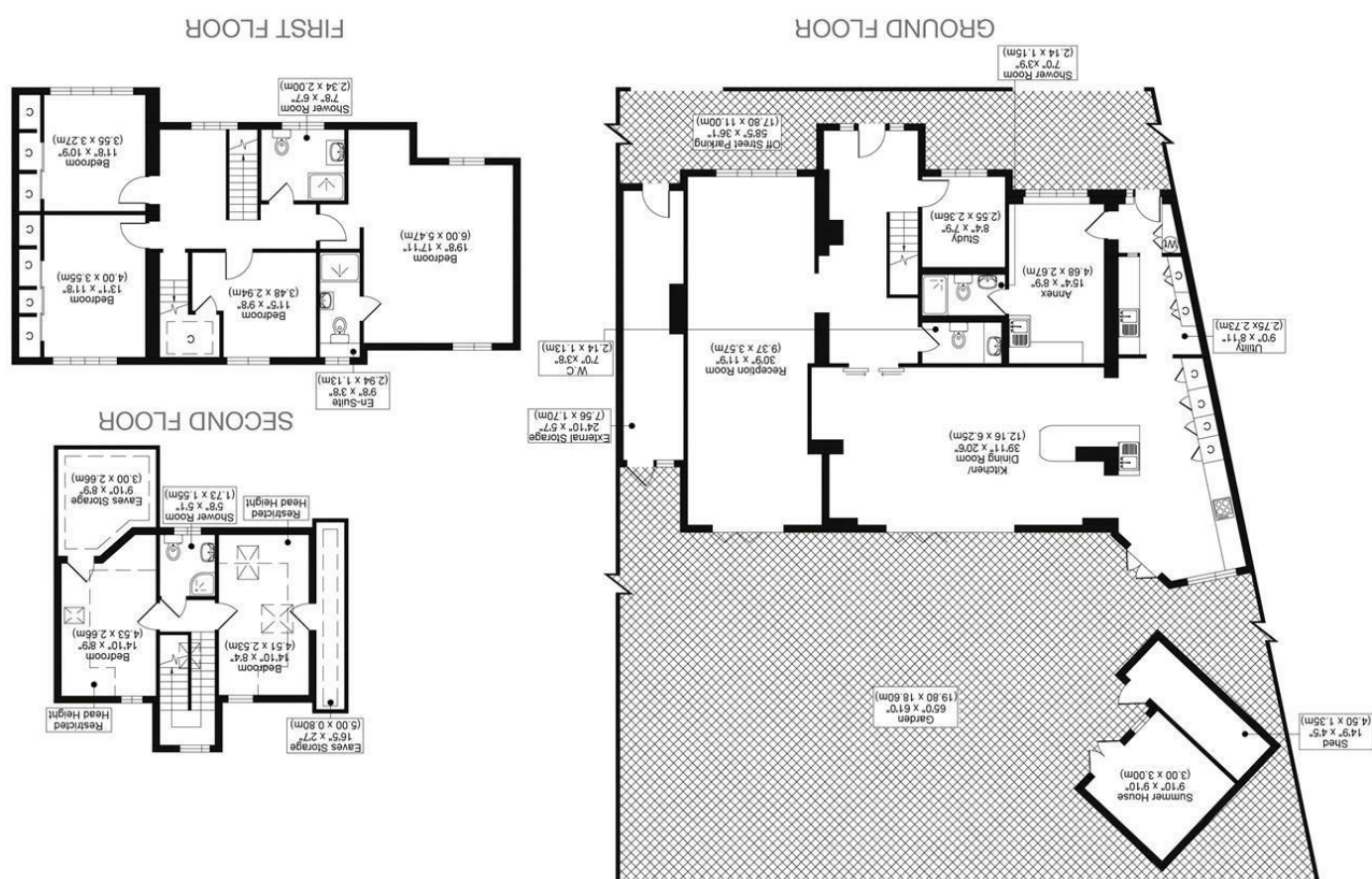


All measurements, walls, doors, windows, fittings and their appliances, their size and locations are shown conventionally and are approximate only and cannot be regarded as being a representation either by the seller or his agent.

optica  
MEDA  
optimedia.co.uk



**SOUTHWAY, SM5**





\*\*GUIDE PRICE £1,350,000 - £1,450,000\*\*

NESTLED IN THE CHARMING AREA OF SOUTHWAY, CARSHALTON, THIS IMPRESSIVE DETACHED HOUSE OFFERS A PERFECT BLEND OF MODERN LIVING AND CLASSIC ELEGANCE. THE PROPERTY HAS BEEN RECENTLY REFURBISHED TO A HIGH STANDARD, ENSURING A COMFORTABLE AND STYLISH HOME FOR ITS NEW OWNERS.

STEP INSIDE TO DISCOVER TWO BEAUTIFULLY APPOINTED RECEPTION ROOMS AND A SEPARATE STUDY – PERFECT FOR BOTH RELAXED LIVING AND WORKING FROM HOME. AT THE HEART OF THE HOME IS A STUNNING OPEN-PLAN KITCHEN AND DINING AREA, DESIGNED FOR BOTH EVERYDAY USE AND ENTERTAINING. BIFOLD DOORS OPEN ONTO A LANDSCAPED REAR GARDEN, CREATING A SEAMLESS TRANSITION BETWEEN INDOOR AND OUTDOOR LIVING – IDEAL FOR AL FRESCO DINING AND SUMMER GATHERINGS. ADDITIONALLY, THE GROUND FLOOR OFFERS A VERSATILE SPACE WITH ANNEX POTENTIAL – PERFECT FOR GUESTS, A HOME OFFICE, OR A PLAYROOM, DEPENDING ON YOUR FAMILY’S NEEDS.

UPSTAIRS, THE HOME CONTINUES TO IMPRESS WITH SIX GENEROUSLY SIZED BEDROOMS AND FOUR CONTEMPORARY BATHROOMS, OFFERING COMFORT, PRIVACY, AND FLEXIBILITY FOR FAMILIES OF ALL SIZES.

THIS DELIGHTFUL HOME IS SITUATED IN A PEACEFUL NEIGHBOURHOOD, MAKING IT AN IDEAL RETREAT WHILE STILL BEING CONVENIENTLY LOCATED NEAR LOCAL AMENITIES AND TRANSPORT LINKS. WITH ITS COMBINATION OF SPACIOUS LIVING AREAS, MODERN FEATURES, AND A LOVELY GARDEN, THIS PROPERTY IS A RARE FIND IN THE CARSHALTON AREA. IT PRESENTS AN EXCELLENT OPPORTUNITY FOR FAMILIES SEEKING A COMFORTABLE AND STYLISH HOME.

- CHAIN FREE
- LUXURY HOME
- SOUGHT AFTER LOCATION
- 6 BEDROOMS + ANNEX
- EPC RATING C
- COUNCIL TAX BAND G

