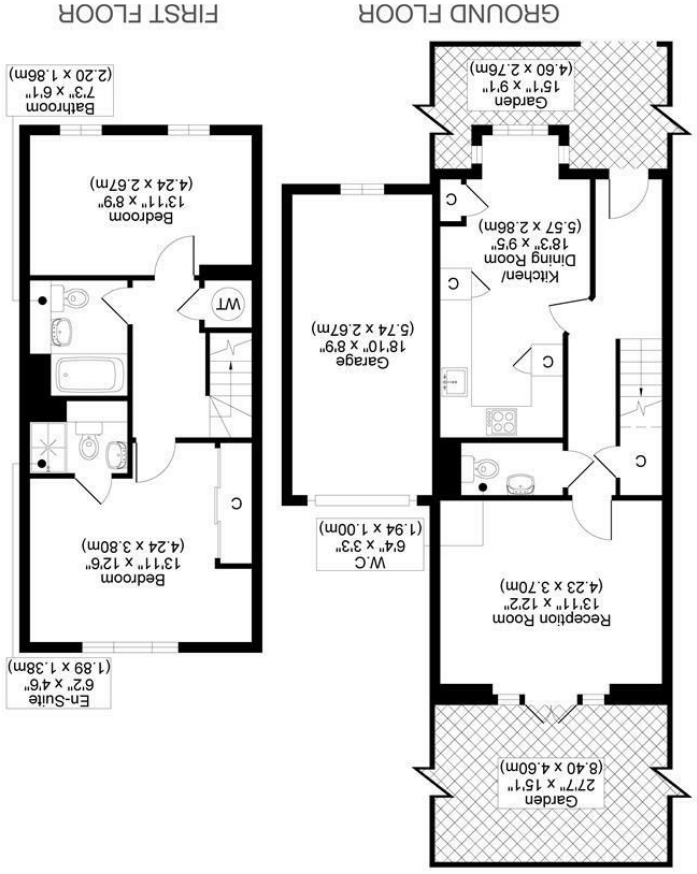




DIAMOND JUBILEE WAY, SMS
TOTAL APPROX FLOOR PLAN AREA INCLUDING GARAGE 1066 SQ.FT (99 SQ.M)
TOTAL APPROX FLOOR PLAN AREA EXCLUDING GARAGE 901 SQ.FT (84 SQ.M)



All measurements, walls, doors, windows, fittings and their appliances, their size and locations are shown conventionally and are approximate only and cannot be regarded as being a representation either by the seller or his agent.



GUIDE PRICE £500,000 - £550,000

NESTLED IN THE HIGHLY SOUGHT-AFTER AREA OF CARSHALTON, THIS DELIGHTFUL MID-TERRACE HOUSE ON DIAMOND JUBILEE WAY OFFERS THE PERFECT COMBINATION OF MODERN LIVING AND COMFORT.

AS YOU STEP INSIDE, YOU ARE GREETED BY THE HEART OF THE HOME — A BEAUTIFULLY DESIGNED MODERN KITCHEN AND DINING AREA, CREATING A PERFECT SPACE FOR FAMILY MEALS AND SOCIAL GATHERINGS. THE WELL-EQUIPPED KITCHEN FEATURES CONTEMPORARY APPLIANCES AND AMPLE STORAGE, MAKING IT A DREAM FOR ANY HOME COOK.

CONTINUING THROUGH THE PROPERTY, YOU WILL FIND A SPACIOUS RECEPTION ROOM, IDEAL FOR UNWINDING OR ENTERTAINING GUESTS. AS YOU STEP THROUGH THE DOUBLE PATIO DOORS, YOU ENTER A WELL-PRESENTED, SOUTHERLY-FACING GARDEN, PERFECT FOR ENJOYING THE OUTDOORS AND ENTERTAINING.

THE HOME BOASTS TWO GENEROUSLY SIZED BEDROOMS, EACH OFFERING PLENTY OF SPACE FOR REST AND PRIVACY. ADDITIONALLY, THERE ARE TWO BATHROOMS, WITH THE MASTER SUITE BENEFITING FROM AN EN-SUITE FOR ADDED CONVENIENCE, PERFECT FOR BOTH RESIDENTS AND VISITORS.

- 2 DOUBLE BEDROOMS & 2 BATHROOMS INCLUDING ENSUITE
- MODERN THROUGHOUT
- SOUGHT AFTER LOCATION
- GARAGE
- COUNCI TAX BAND E
- EPC RATING B

