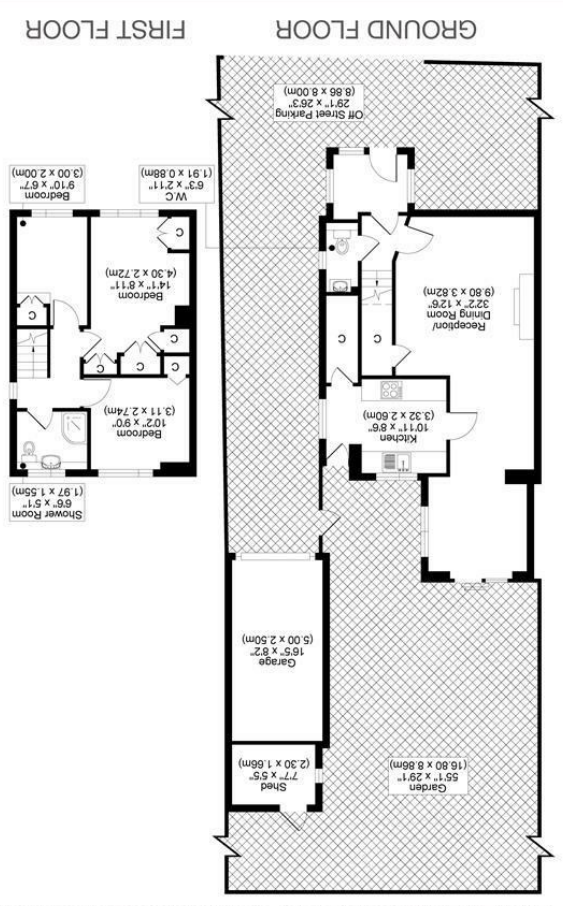




POPULAR CRESCENT, KT19  
TOTAL APPROX FLOOR PLAN AREA INCLUDING GARAGE & OUTBUILDING 1084 SQ.FT (101 SQ.M)  
TOTAL APPROX FLOOR PLAN AREA EXCLUDING GARAGE & OUTBUILDING 908 SQ.FT (84 SQ.M)



All measurements, walls, doors, windows, fittings and their appliances, their size and locations are shown conventionally and are approximate only and cannot be regarded as being a representation either by the seller or his agent.





**\*CHAIN FREE\***  
SITUATED IN THE CHARMING AREA OF POPLAR CRESCENT, EWELL, THIS DELIGHTFUL THREE-BEDROOM SEMI-DETACHED HOUSE OFFERS A PERFECT BLEND OF COMFORT AND CONVENIENCE. THE PROPERTY BOASTS A GENEROUS OPEN RECEPTION ROOM WITH A DOUBLE ASPECT, ALLOWING NATURAL LIGHT TO FLOOD THE SPACE, CREATING A WARM AND INVITING ATMOSPHERE FOR FAMILY GATHERINGS OR ENTERTAINING GUESTS.

THE WELL-PROPORTIONED BEDROOMS PROVIDE AMPLE SPACE FOR RELAXATION, WHILE THE MODERN BATHROOM ENSURES A PRACTICAL YET STYLISH SETTING FOR YOUR DAILY ROUTINES. ADDITIONALLY, THE PROPERTY FEATURES A GARAGE AND PARKING, MAKING IT AN IDEAL CHOICE FOR FAMILIES.

THE SPACIOUS GARDEN IS A STANDOUT FEATURE, PROVIDING A WONDERFUL OUTDOOR SPACE FOR CHILDREN TO PLAY, GARDENING ENTHUSIASTS TO THRIVE, OR SIMPLY FOR ENJOYING THE FRESH AIR ON SUNNY DAYS. THIS HOME IS PERFECTLY SITUATED FOR THOSE LOOKING TO BENEFIT FROM THE EXCELLENT EDUCATIONAL OPPORTUNITIES AT EPSOM AND EWELL HIGH SCHOOL, MAKING IT AN ATTRACTIVE OPTION FOR FAMILIES.

EWELL VILLAGE IS JUST A SHORT TRAVEL AWAY, OFFERING A DELIGHTFUL ARRAY OF SHOPS, CAFES, AND PARKS, ENSURING THAT ALL YOUR DAILY NEEDS ARE MET WITHIN EASY REACH. WITH ITS COMBINATION OF SPACIOUS LIVING, A LOVELY GARDEN, AND PROXIMITY TO LOCAL AMENITIES, THIS SEMI-DETACHED HOUSE ON POPLAR CRESCENT IS A FANTASTIC OPPORTUNITY FOR ANYONE LOOKING TO SETTLE IN THIS VIBRANT COMMUNITY. DON'T MISS THE CHANCE TO MAKE THIS CHARMING PROPERTY YOUR NEW HOME.

- SEMI-DETACHED 3-BEDROOM HOUSE
- THREE BEDROOMS PLUS LARGE RECEPTION ROOM AND SECLUDED GARDEN
- NO ONWARD CHAIN
- COUNCIL TAX BAND D
- EPC RATING D

